

SHARED OWNERSHIP AT
DISCOVERY, E4



Site plan and apartment layouts





2

3

SITE PLAN



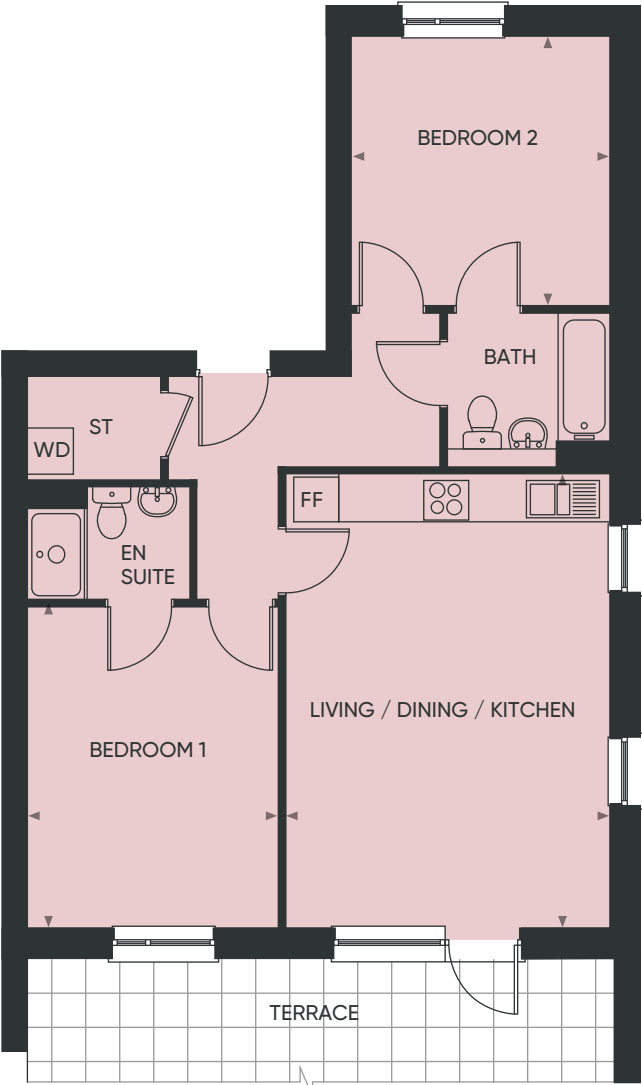
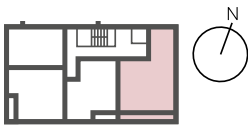
Sat Nav Postcode
E4 9JQ

2 BEDROOM APARTMENT

96 MERRIAM CLOSE | BLOCK A | GROUND FLOOR

Gross internal area **71.6m²**

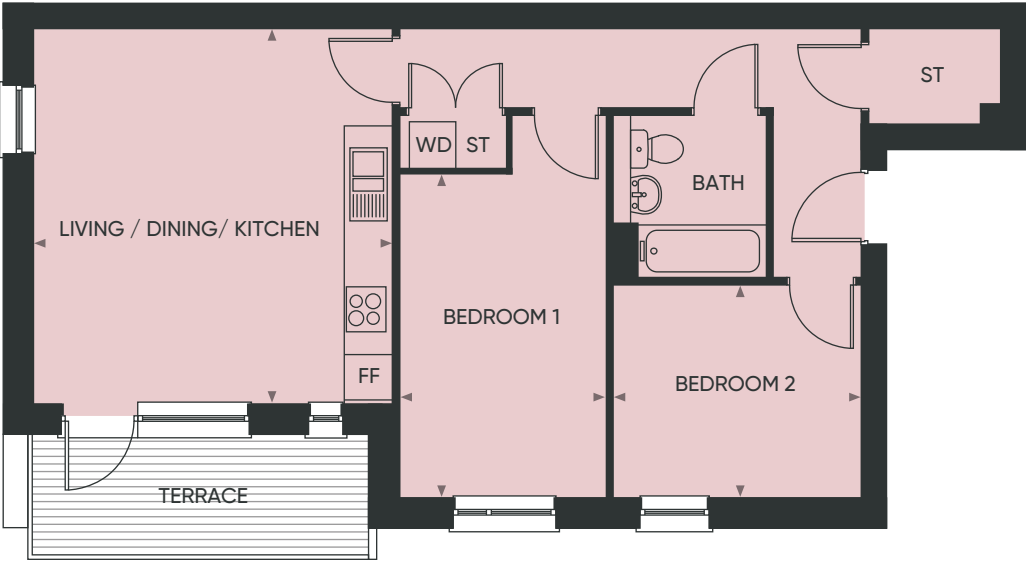
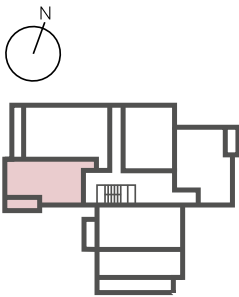
Living / Dining / Kitchen	6.0m	x	4.3m	19'8"	x	14'1"
Bedroom 1	4.3m	x	3.3m	14'1"	x	10'10"
Bedroom 2	3.6m	x	3.4m	11'10"	x	11'2"



2 BEDROOM APARTMENT

62 MERRIAM CLOSE | BLOCK C | GROUND FLOOR

Gross internal area **64.2m²**



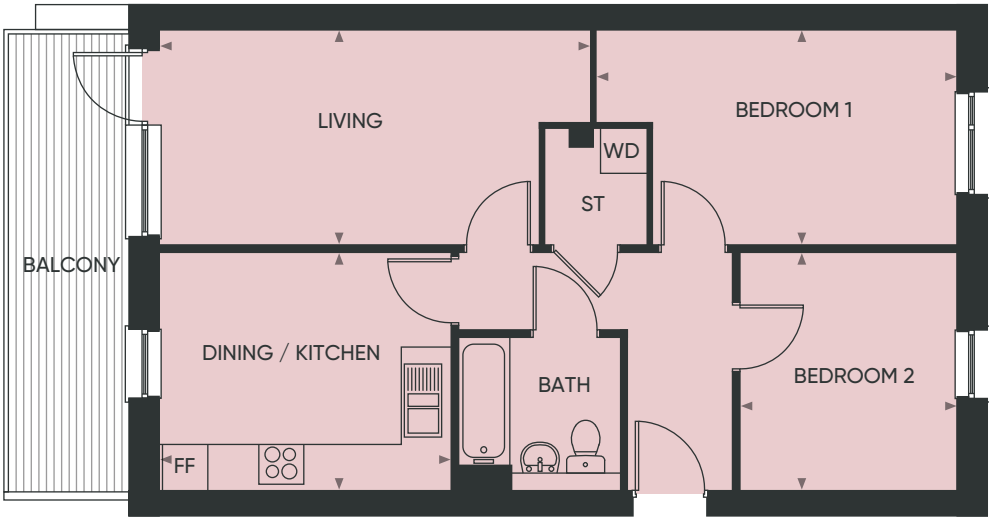
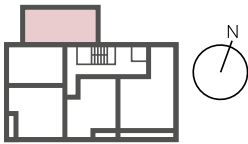
Living / Dining / Kitchen	4.9m	x	4.8m	16'1"	x	15'9"
Bedroom 1	4.3m	x	2.8m	14'1"	x	9'2"
Bedroom 2	3.3m	x	2.8m	10'10"	x	9'2"

2 BEDROOM APARTMENT

103 MERRIAM CLOSE | BLOCK A | FIRST FLOOR

Gross internal area **64.2m²**

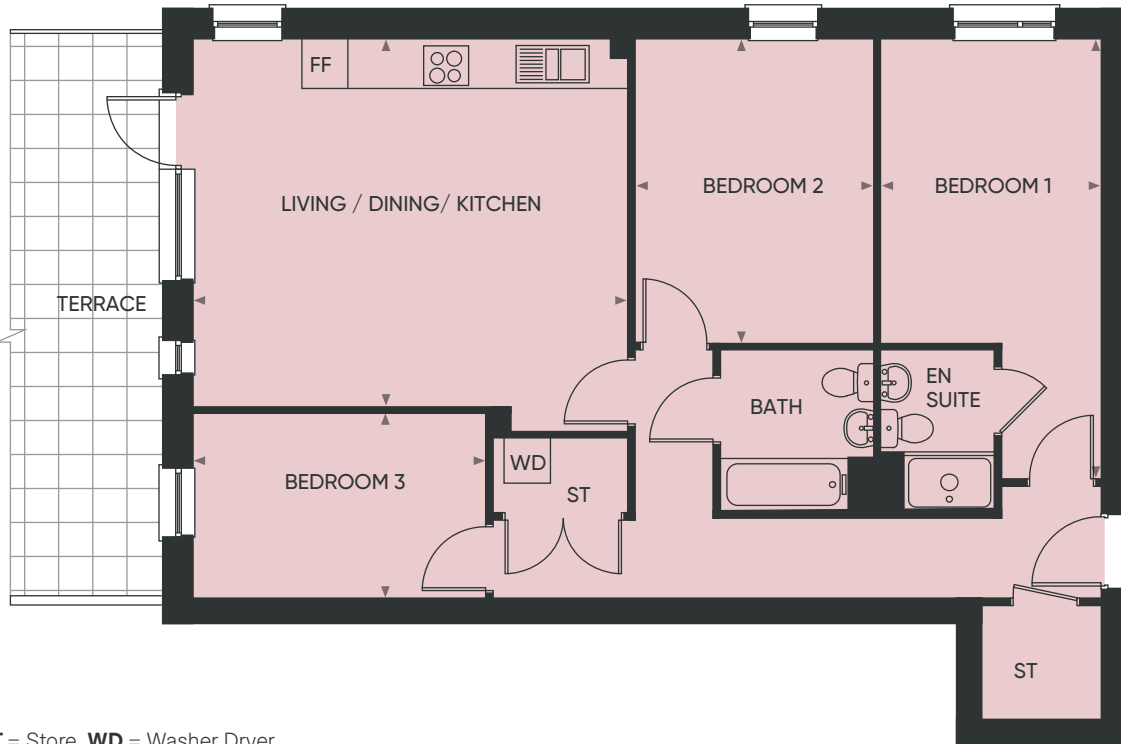
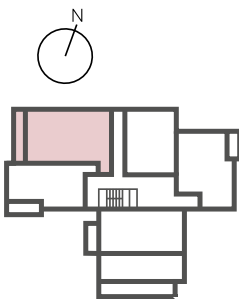
Dining / Kitchen	3.9m	x	3.2m	12'10"	x	10'6"
Living	5.7m	x	2.8m	18'8"	x	9'2"
Bedroom 1	4.8m	x	2.8m	10'2"	x	9'2"
Bedroom 2	3.0m	x	2.9m	9'10"	x	9'6"



3 BEDROOM APARTMENT

63 MERRIAM CLOSE | BLOCK C | GROUND FLOOR

Gross internal area **91.4m²**



Living / Dining / Kitchen	5.8m	x	4.9m	19'0"	x	16'1"
Bedroom 1	5.8m	x	2.9m	19'0"	x	9'6"
Bedroom 2	4.0m	x	3.2m	13'1"	x	10'6"
Bedroom 3	3.9m	x	2.5m	12'10"	x	8'2"

FF = Fridge Freezer ST = Store WD = Washer Dryer

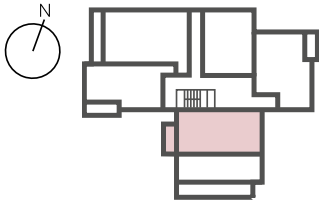
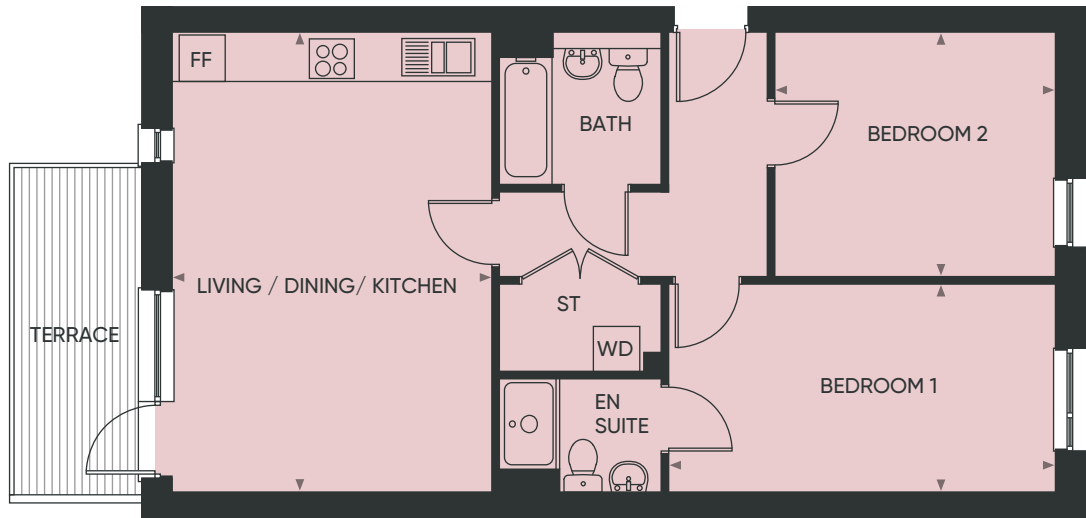
FF = Fridge Freezer ST = Store WD = Washer Dryer

2 BEDROOM APARTMENT

65 MERRIAM CLOSE | BLOCK C | GROUND FLOOR

Gross internal area **70.9m²**

Living / Dining / Kitchen	6.1m x 4.2m	20'0" x 13'9"
Bedroom 1	5.1m x 2.8m	16'9" x 8'6"
Bedroom 2	3.7m x 3.3m	12'2" x 10'10"

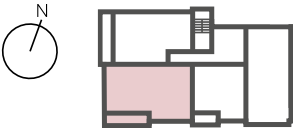
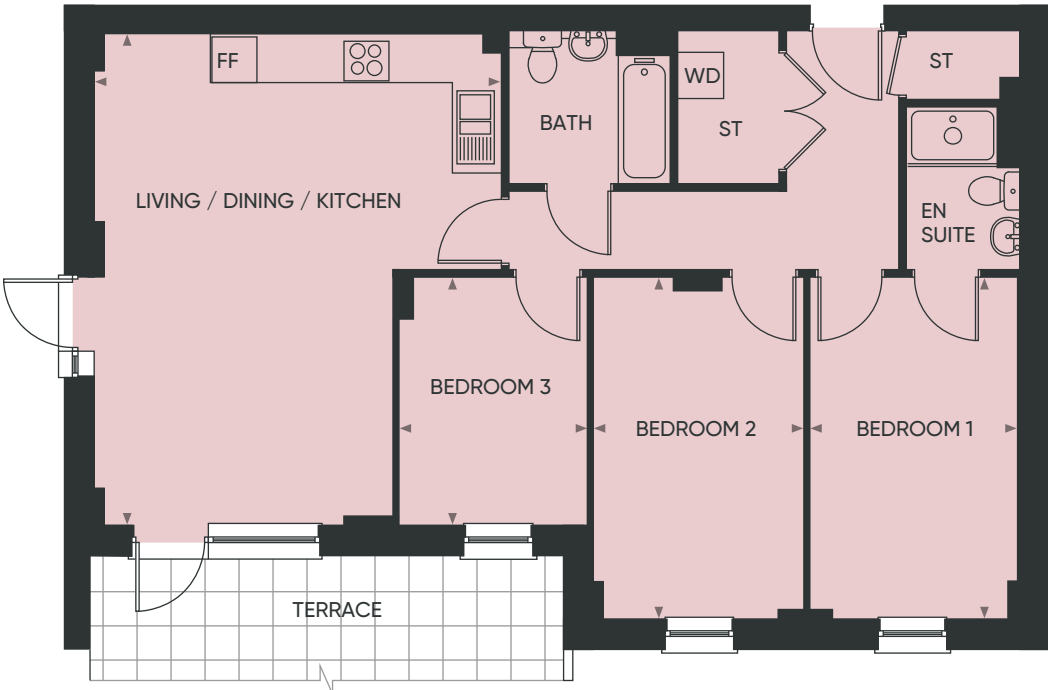


3 BEDROOM APARTMENT

26 MERRIAM CLOSE | BLOCK E | GROUND FLOOR

Gross internal area **86.2m²**

Living / Dining / Kitchen	6.5m x 5.4m	21'4" x 17'9"
Bedroom 1	4.5m x 2.8m	14'9" x 9'2"
Bedroom 2	4.5m x 2.8m	14'9" x 9'2"
Bedroom 3	3.3m x 2.5m	10'10" x 8'2"



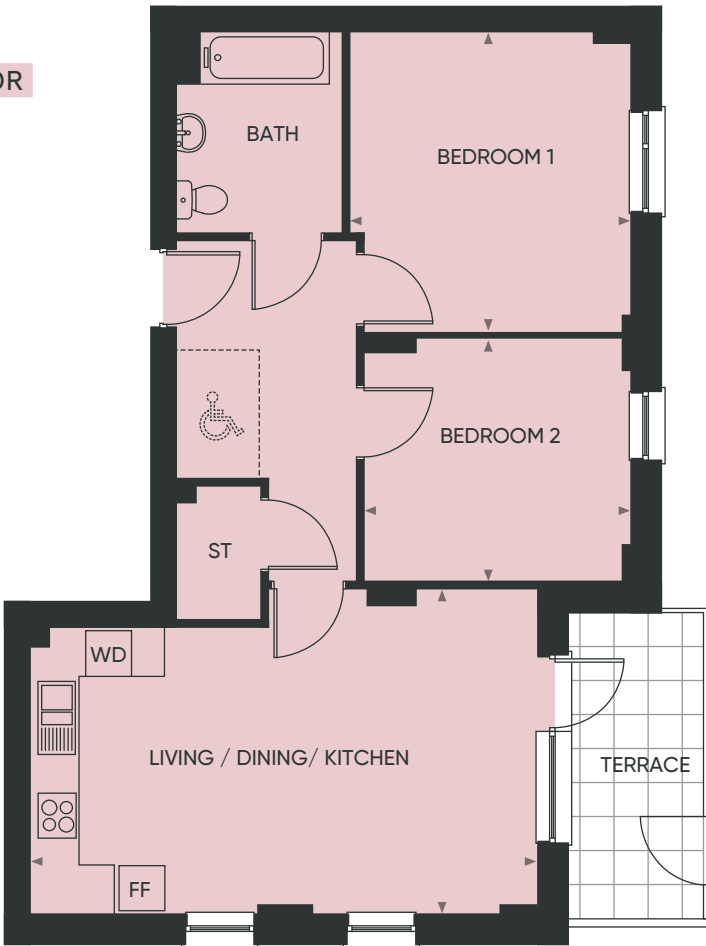
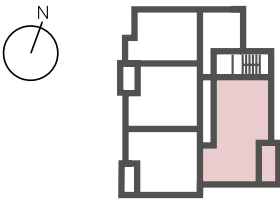
6

2 BEDROOM APARTMENT

42 MERRIAM CLOSE | BLOCK D | GROUND FLOOR

Gross internal area **71.9m²**

Living / Dining / Kitchen	6.7m x 4.3m	22'0" x 14'1"
Bedroom 1	4.0m x 3.7m	13'1" x 12'2"
Bedroom 2	3.6m x 3.2m	11'10" x 10'6"



FF = Fridge Freezer ST = Store WD = Washer Dryer

DISCOVERY, E4

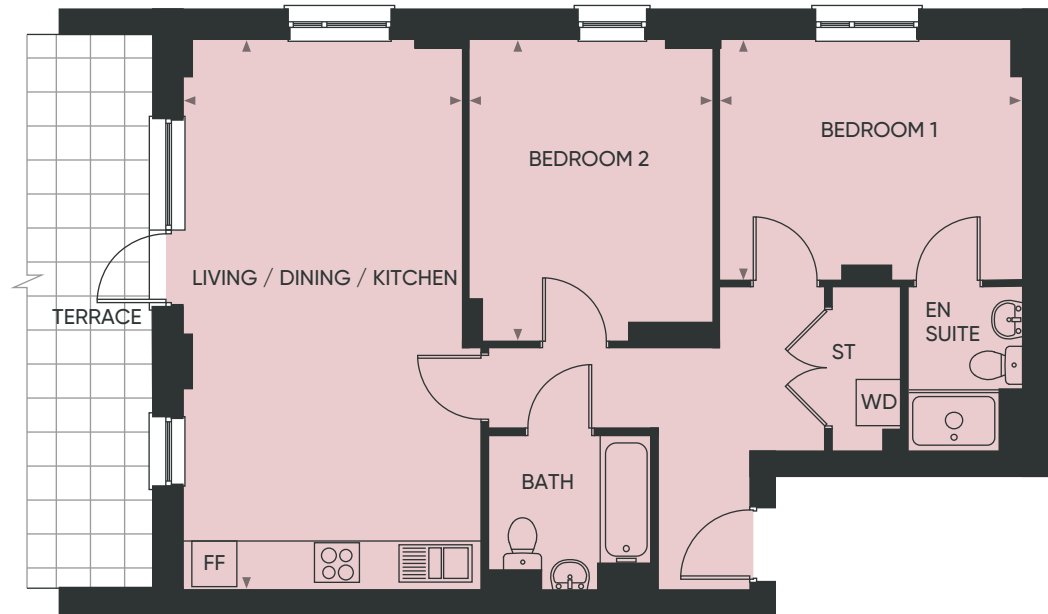
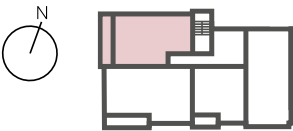
7

2 BEDROOM APARTMENT

27 MERRIAM CLOSE | BLOCK E | GROUND FLOOR

Gross internal area **73.9m²**

Living / Dining / Kitchen	7.3m x 3.7m	23'11" x 12'2"
Bedroom 1	4.0m x 3.2m	13'1" x 10'6"
Bedroom 2	4.0m x 3.3m	13'1" x 10'10"



FF = Fridge Freezer ST = Store WD = Washer Dryer

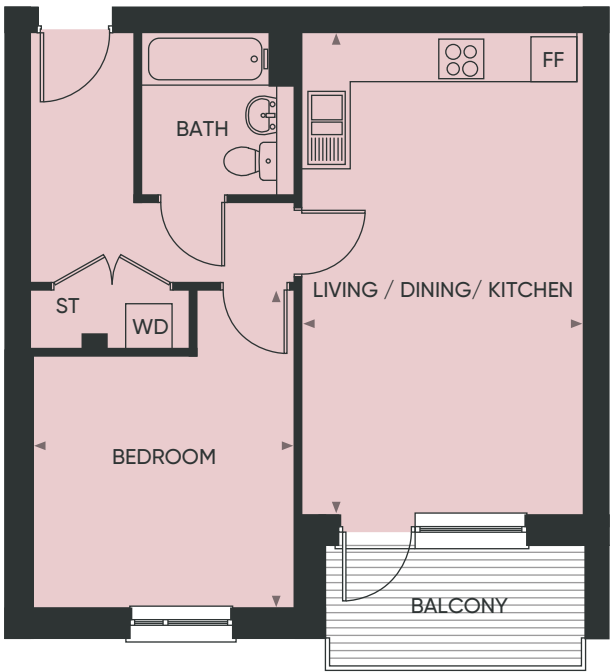
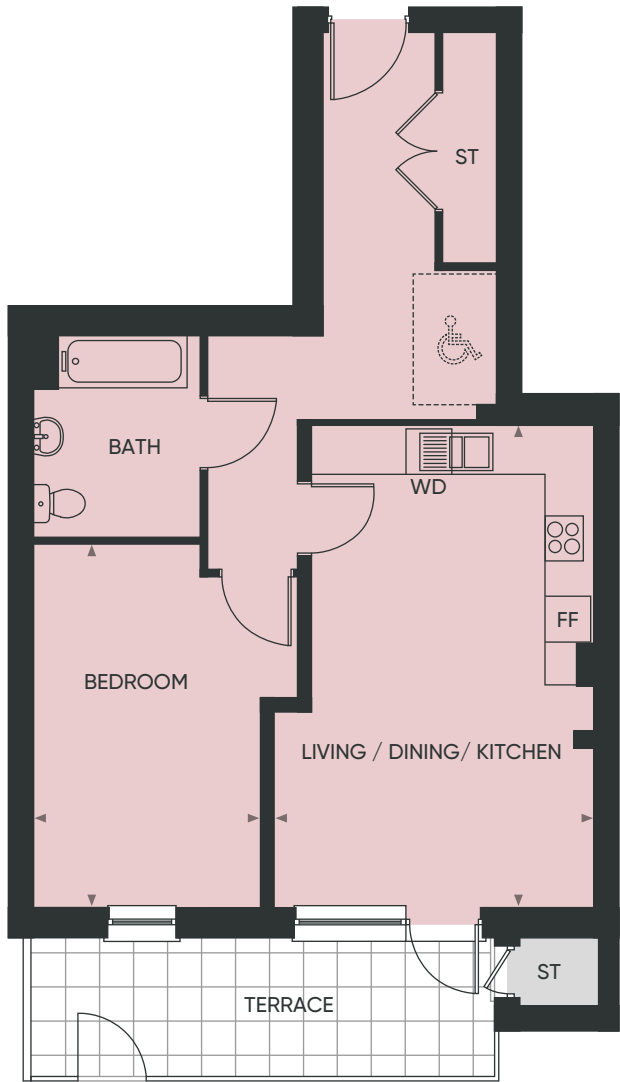
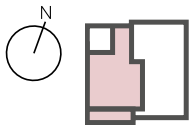
DISCOVERY, E4

1 BEDROOM APARTMENT

24 MERRIAM CLOSE | BLOCK F | GROUND FLOOR

Gross internal area **63.6 m²**

Living / Dining / Kitchen	6.4m x 4.2m	21'0" x 13'9"
Bedroom	4.8m x 3.5m	15'10" x 11'8"



1 BEDROOM APARTMENT

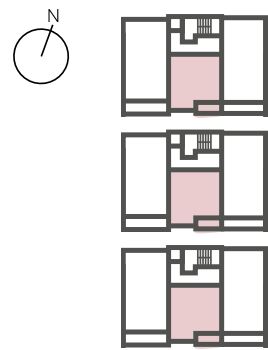
16 MERRIAM CLOSE | BLOCK F | FIRST FLOOR

19 MERRIAM CLOSE | BLOCK F | SECOND FLOOR

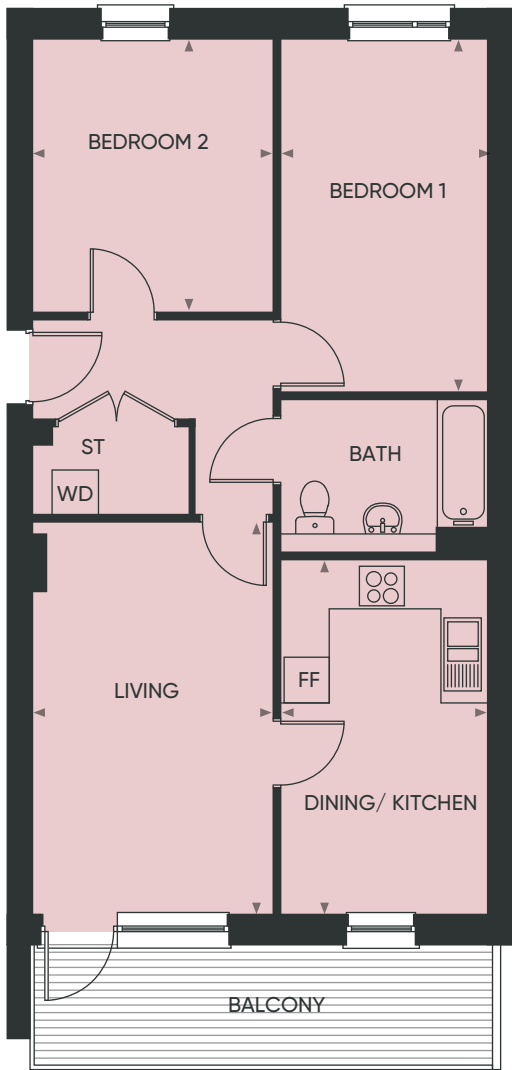
22 MERRIAM CLOSE | BLOCK F | THIRD FLOOR

Gross internal area **50.7 m²**

Living / Dining / Kitchen	6.4m x 3.7m	21'0" x 12'2"
Bedroom	4.2m x 3.5m	13'9" x 11'6"



8



2 BEDROOM APARTMENT

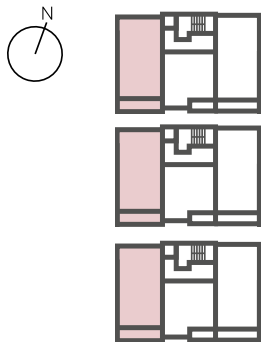
15 MERRIAM CLOSE | BLOCK F | FIRST FLOOR

18 MERRIAM CLOSE | BLOCK F | SECOND FLOOR

21 MERRIAM CLOSE | BLOCK F | THIRD FLOOR

Gross internal area **70 m²**

Dining / Kitchen	4.7m x 2.8m	15'5" x 9'2"
Living	5.2m x 3.2m	17'1" x 10'6"
Bedroom 1	4.7m x 2.8m	15'5" x 9'2"
Bedroom 2	3.6m x 3.2m	11'10" x 10'6"



FF = Fridge Freezer ST = Store WD = Washer Dryer

DISCOVERY, E4

2 BEDROOM APARTMENT

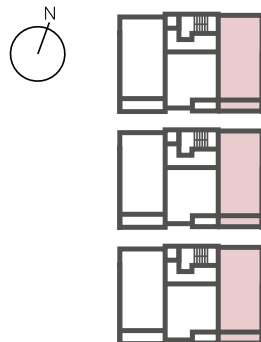
17 MERRIAM CLOSE | BLOCK F | FIRST FLOOR

20 MERRIAM CLOSE | BLOCK F | SECOND FLOOR

23 MERRIAM CLOSE | BLOCK F | THIRD FLOOR

Gross internal area **70.9 m²**

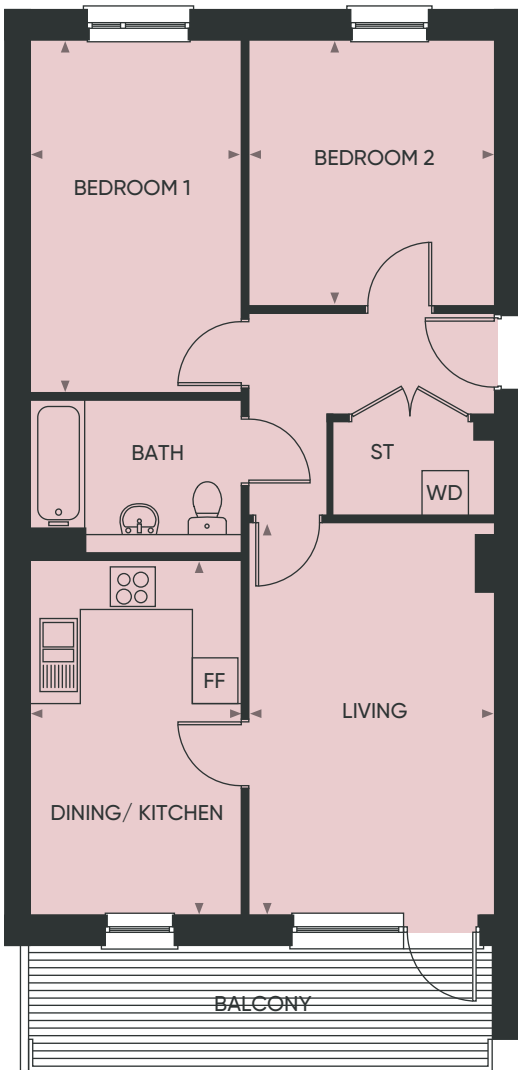
Dining / Kitchen	4.7m x 2.8m	15'5" x 9'2"
Living	5.2m x 3.3m	17'1" x 10'10"
Bedroom 1	4.7m x 2.8m	15'5" x 9'9"
Bedroom 2	3.5m x 3.3m	11'6" x 10'10"



FF = Fridge Freezer ST = Store WD = Washer Dryer

DISCOVERY, E4

9

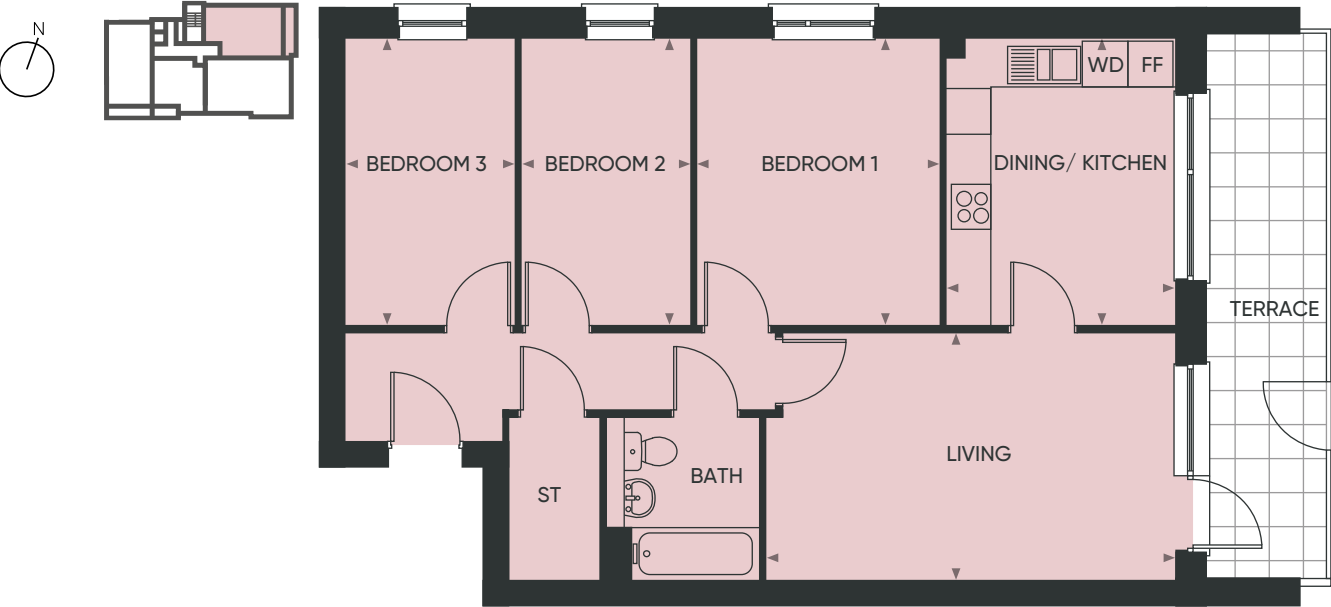


3 BEDROOM APARTMENT

1 MERRIAM CLOSE | BLOCK G | GROUND FLOOR

Gross internal area **74.9 m²**

Dining / Kitchen	3.8m x 3.0m	12'6" x 9'11"
Living	5.4m x 3.3m	17'9" x 10'10"
Bedroom 1	3.8m x 3.2m	12'6" x 10'6"
Bedroom 2	3.8m x 2.3m	12'6" x 7'6"
Bedroom 3	3.8m x 2.3m	12'6" x 7'6"

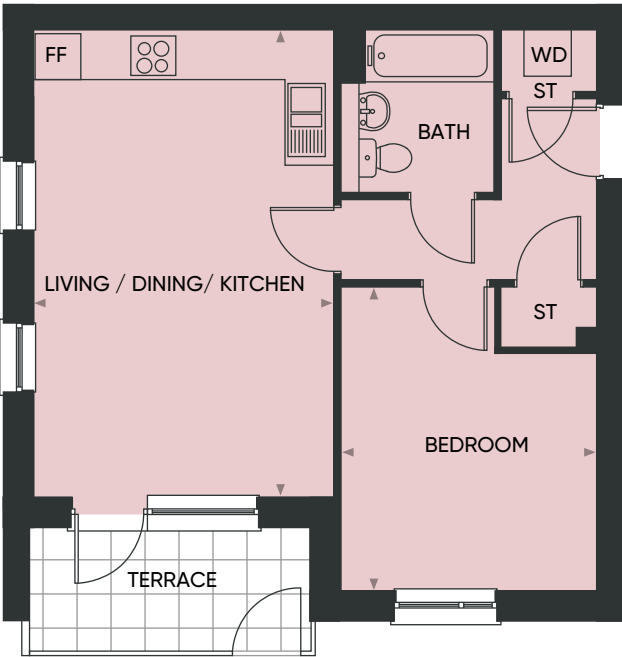


1 BEDROOM APARTMENT

115 MERRIAM CLOSE | BLOCK H | GROUND FLOOR

Gross internal area **50 m²**

Living / Dining / Kitchen	6.2m x 4.0m	20'4" x 13'1"
Bedroom	4.0m x 3.4m	13'1" x 11'2"



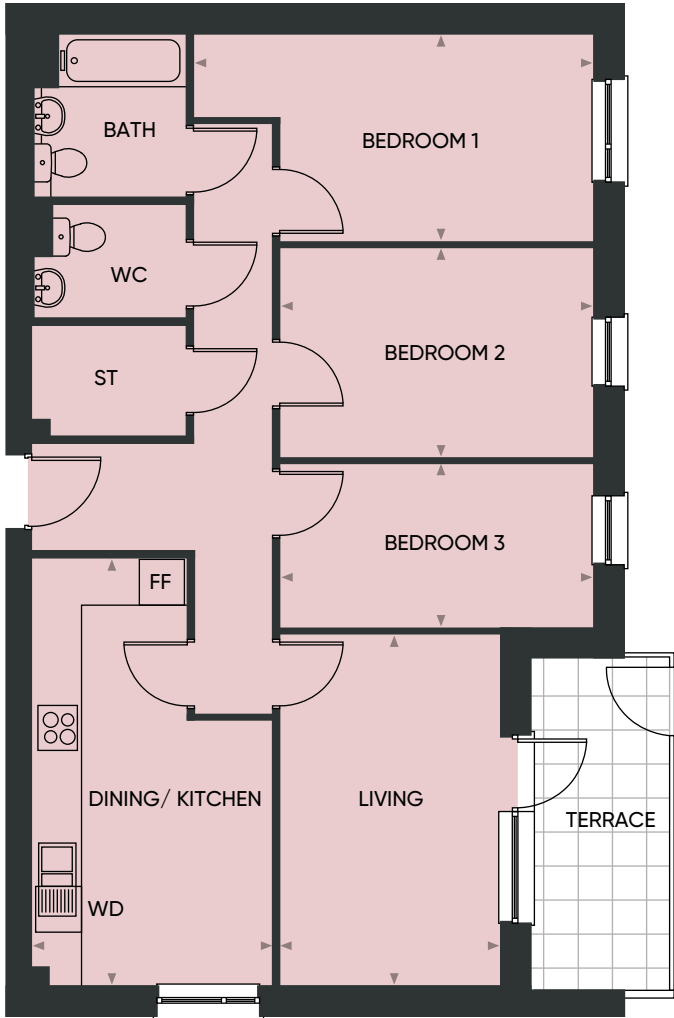
10

3 BEDROOM APARTMENT

114 MERRIAM CLOSE | BLOCK H | GROUND FLOOR

Gross internal area **87.7 m²**

Dining / Kitchen	5.7m x 3.2m	18'8" x 10'6"
Living	4.7m x 2.9m	15'5" x 9'6"
Bedroom 1	5.3m x 2.8m	13'9" x 9'2"
Bedroom 2	4.2m x 2.8m	13'9" x 9'2"
Bedroom 3	4.2m x 2.2m	13'9" x 7'3"



FF = Fridge Freezer ST = Store WC = Water Closet WD = Washer Dryer

11



ABOUT ISHA

Islington and Shoreditch Housing Association (ISHA) is a community and neighbourhood based Housing organisation managing and developing quality affordable housing for people in North and East London, especially in Hackney, Islington and Waltham Forest.

We want ISHA to stand out of the crowd as a special housing association, one that consistently provides excellent services, listens and acts upon feedback from our customers, continually improves the efficiency of our services and goes the extra mile to make sure things get done quickly.



CGI of Discovery, E4 is indicative only

For more information

sharedownershipatdiscoverye4.co.uk

020 7704 7388 | sales@isha.co.uk

These brief particulars have been prepared and are intended as convenient guide to supplement an inspection or survey and do not form, or form any part of any offer or contract. Their accuracy is not guaranteed. Room dimensions are approximate, taken from the widest point, rounded to the first decimal and subject to change. They contain statements of opinion and in some instances we have relied on information supplied by others. Design elements and specification details may change without further notice. You should verify the particulars on your visit to the property, and the particulars do not obviate the need for a full structural survey and all the appropriate enquiries. Accordingly, there shall be no liability as a result of any error or omission in the particulars or any information given. December 2020.